

BioMaster®4 Plus

MEIKO **GREEN**
WASTE SOLUTIONS



A taste for waste



MEIKO GREEN Waste Solutions for food and kitchen waste. For a noticeable benefit to hygiene and your bottom line.



BioMaster® 4 Plus


The background of the advertisement is a photograph of a central kitchen. It shows stainless steel shelving units, a sink area with a draining basket, and a person in an orange apron. A green exit sign is visible on the wall.

Food waste treatment systems in central kitchens

MEIKO GREEN Waste Solutions for a clean sweep

Central kitchens produce waste as well as dirty dishes. Food waste from residents' plates and vegetable peelings and fish bones from cooking. *MEIKO GREEN Waste Solutions* mean you no longer have to collect all of this in dirty bins and store it in a chilled room. Waste is discarded right where it is created: in the kitchen and using the clearing belt in the dishwashing area. Simply pop it in the feeding station, press the button

and forget about it. You can turn your attention back to the residents whilst the waste is converted into biomass and piped to a tank in a closed system where it is stored. That saves space, it is odour free, pest free and does not need to be chilled. Once the tank is full, it is pumped out and the content sent to a biogas plant to generate energy and therefore profit. Let's not forget, often the grease trap can even be integrated into the process.

An inset photograph showing a person's hands holding a bowl of food waste (vegetables and meat) over a sink. A small, circular, stainless steel waste treatment device is visible in the sink.

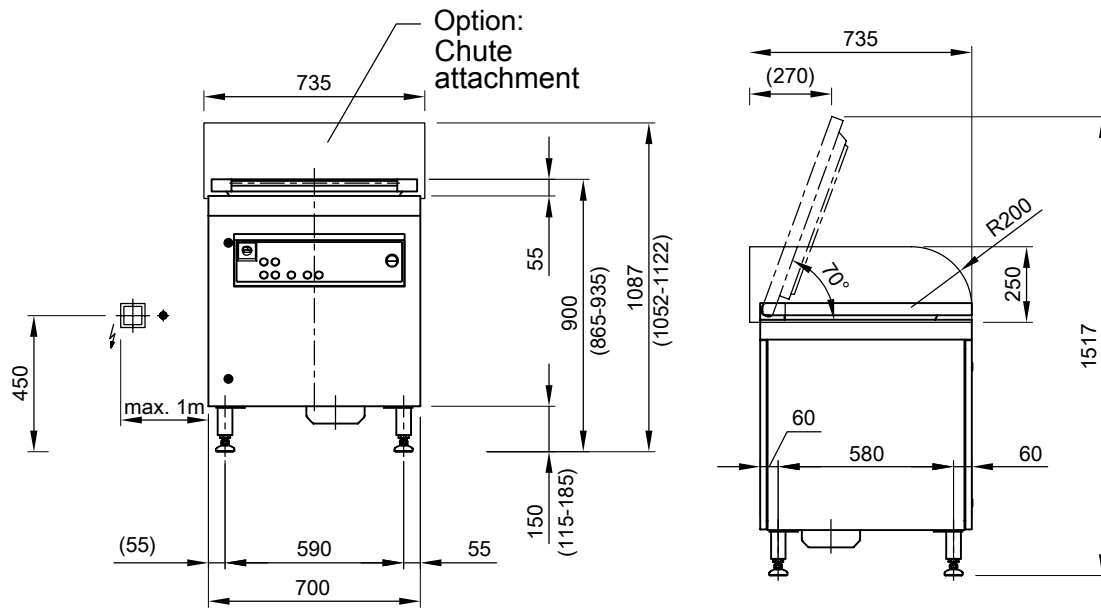
Food waste treatment with the
BioMaster® 4 Plus

BioMaster®4 Plus

MEIKO **GREEN**
WASTE SOLUTIONS



Technical Data



The BioMaster®₄ Plus: a great addition to your kitchen

- » 100 % V2A steel chassis, high-quality surface finish
- » Standby and error function (overheating protection)
- » Internal level monitoring (80% / 100%)
- » Emergency stop function through main switch that can be switched off at all poles
- » Emergency stop function through cover position switch and emergency stop button
- » Treatment cycle adjustable to customer specifications
- » Basic types of operation (standard function, pump, start/stop, etc.)
- » Selection and operation data acquisition, freely programmable PLC control
- » 150 mm ground clearance or can be plinth-mounted
- » Can be connected to tables and hygiene stations

Technical data	
Dimensions (LxWxH)	700 x 700 x 865–935 mm (adjustable feet)
Machine casing	100 % V2A stainless steel
Chute volume	40 litres
Performance	≤ 1000 kg / hour in batch mode
Grinding unit	3 kW “auto reverse” brake motor
Transport pipe connection	PE d 63 screw connection
Cold water connection	Shut-off valve with ¾“ external thread
Process water addition	Automatic, water quantity can be controlled
Power connection	CEE socket, 400 V, 50 Hz, 16 A, 4.5 kW Clockwise rotation field
Electrical protection class	IP X5
Noise emission	≤ 70 db (normal cycle, empty wet run)
Self weight	185 kg
Accessories	Unlocking key, optional: patented pre-grinding unit, chute attachment as splash protection, collection trolley, cutlery catching magnet

Collection trolley

MEIKO **GREEN**
WASTE SOLUTIONS



Practical and ergonomic



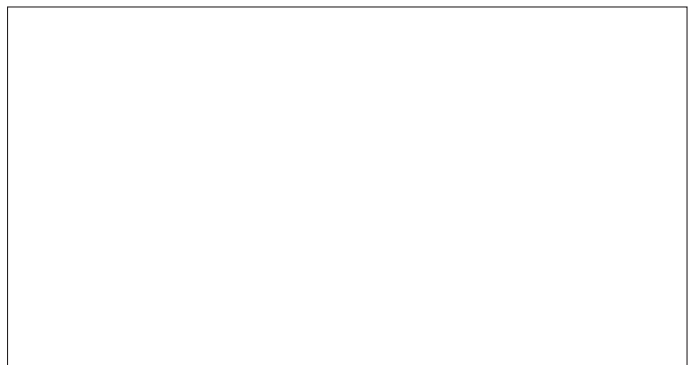
Our collection trolley is a convenient and flexible way to collect your waste

- » Ergonomics in its purest form: using our collection trolley, just one person can comfortably transport up to 30 litres of kitchen and food waste to the BioMaster® and then tip it into the loading chute.
- » Height-adjustable chassis frame: adjust the height of the trolley for the ideal match to the work surface.
- » The cover prevents unpleasant odours. Small quantities of waste can even be stored temporarily in the trolley's container.
- » Easy to clean: the container is dishwasher safe.

Technical data	
Total dimensions (LxWxH)	450 x 480 x 885–1035 mm
Container dimensions including cover (LxWxH)	450 x 480 x 310 mm
Max. fill capacity	35 litres
Effective capacity	30 litres
Self weight	9 kg



Meets the hygiene requirements of DIN SPEC 10534.



MEIKO Australia Pacific Pty. Ltd.
Unit 4, 72-74 Lower Gibbes Street, Chatswood, NSW 2067
Phone 1300 562 500 · www.meiko.com.au · sales@meiko.com.au



600.201.02.11.20/EN/digital

We reserve the right to amend specifications
as part of our product improvement process